

ANEXO B
DIAGRAMAS DE COMPLETACIÓN

DIAGRAMA MECANICO ACTUAL

POZO: SDZ-163

CAMPO SAN DIEGO

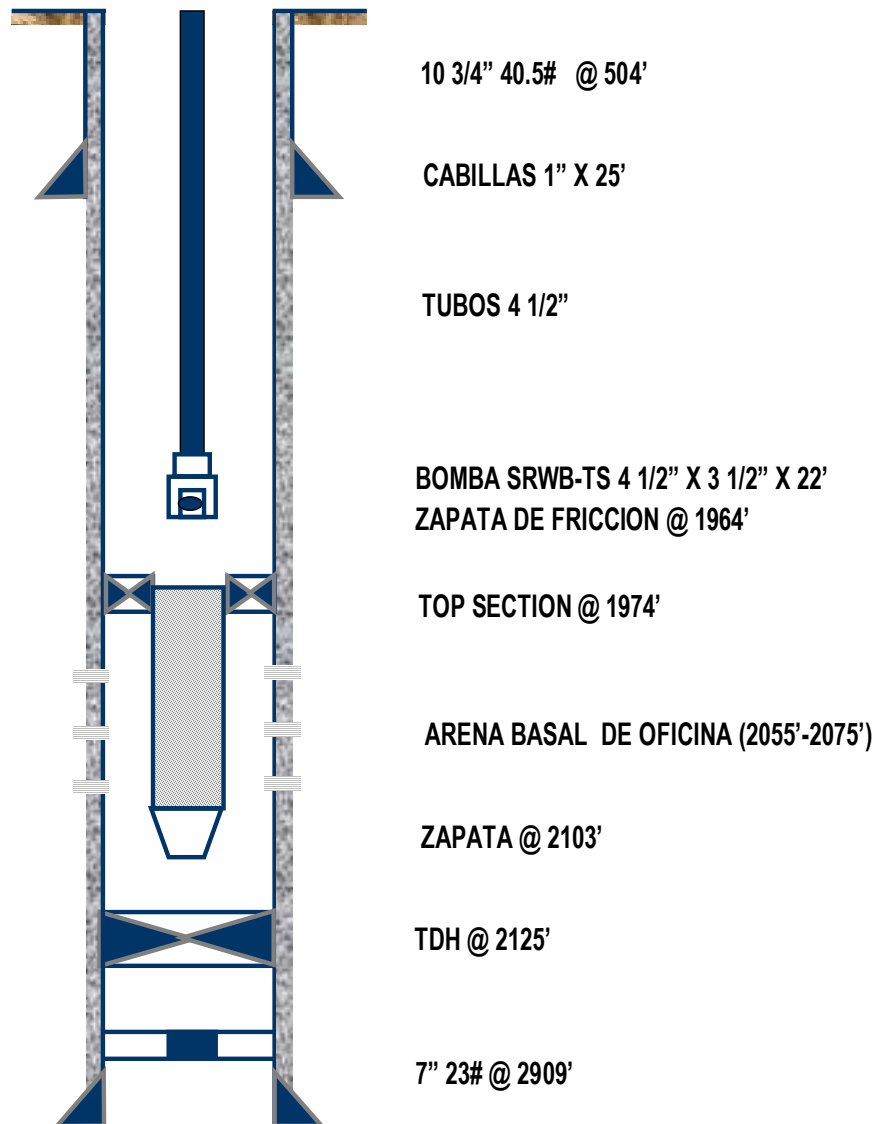
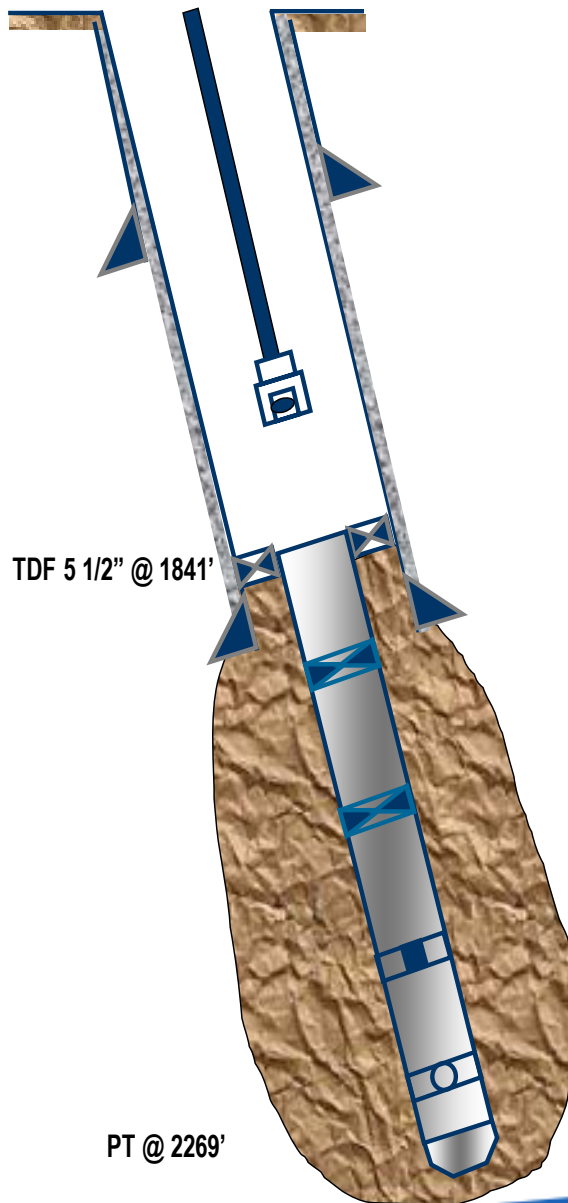


DIAGRAMA MECANICO ACTUAL

POZO: SDZ-161

CAMPO SAN DIEGO

**POZO INCLINADO
ANGULO MAXIMO 7,5° @ 618'**



REV. 10 3/4" 40.5# @ 488'

CABILLAS 1" y 1 1/8"

TUBING 4 1/2"

BOMBA de TUBERIA
IOSA 5 7/8" X 5 1/4" X 22'

VALVULA FIJA @ 1779'

REVESTIDOR 7" @ 1921'

TDF 5 1/2" @ 1841'

PORT COLLAR @ 2037'

NIPLE "B" @ 2059'

PT @ 2269'

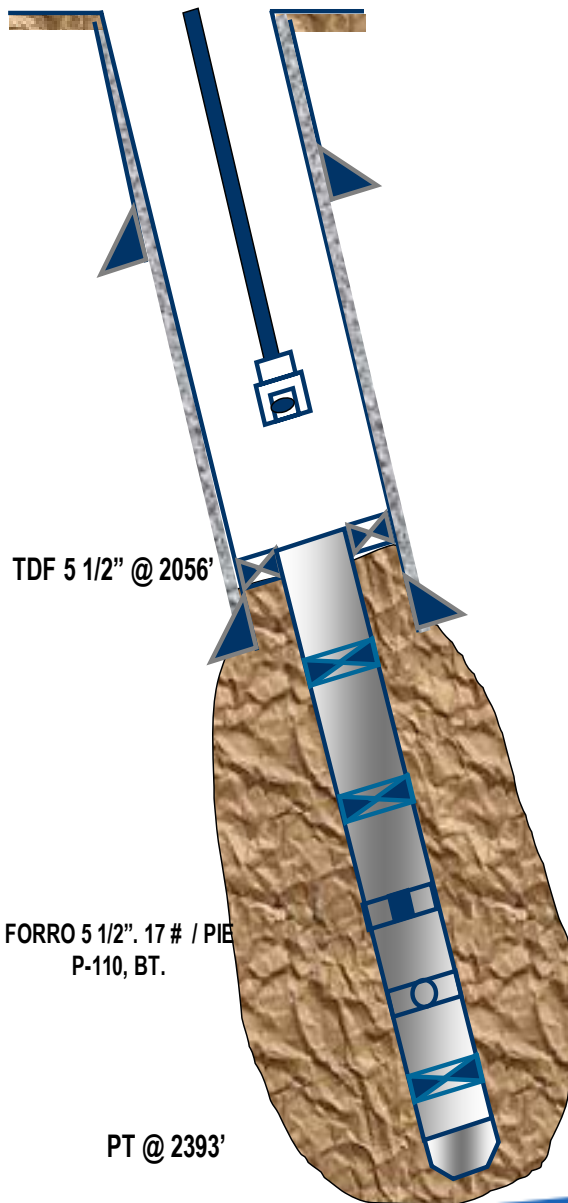
FDF @ 2110'

DIAGRAMA MECANICO ACTUAL

POZO: SDZ-169

CAMPO SAN DIEGO

**POZO INCLINADO
ANGULO MAXIMO 28.5°**



REV. 10 3/4" @ 556'

CABILLAS 1" x 25'

TUBING 4 1/2"

BOMBA DE SUBSUELO
ARHB-F 4" X 3 1/2" X 3 1/2" X 30'

ZAPATA DE FRICCION @ 2014'

REVESTIDOR 7" @ 2132'

JUNTA DE EXPANSION "B" @ 2213'

JUNTA DE EXPANSION "B" @ 2272'

PORT COLLAR @ 2306'

NIPLE "B" @ 2323'

JUNTA DE EXPANSION "B" @ 2340'

FDF @ 2340'

TDF 5 1/2" @ 2056'

FORRO 5 1/2". 17 # / PIE
P-110, BT.

PT @ 2393'

DIAGRAMA MECANICO ACTUAL

POZO: SDZ-168

CAMPO SAN DIEGO

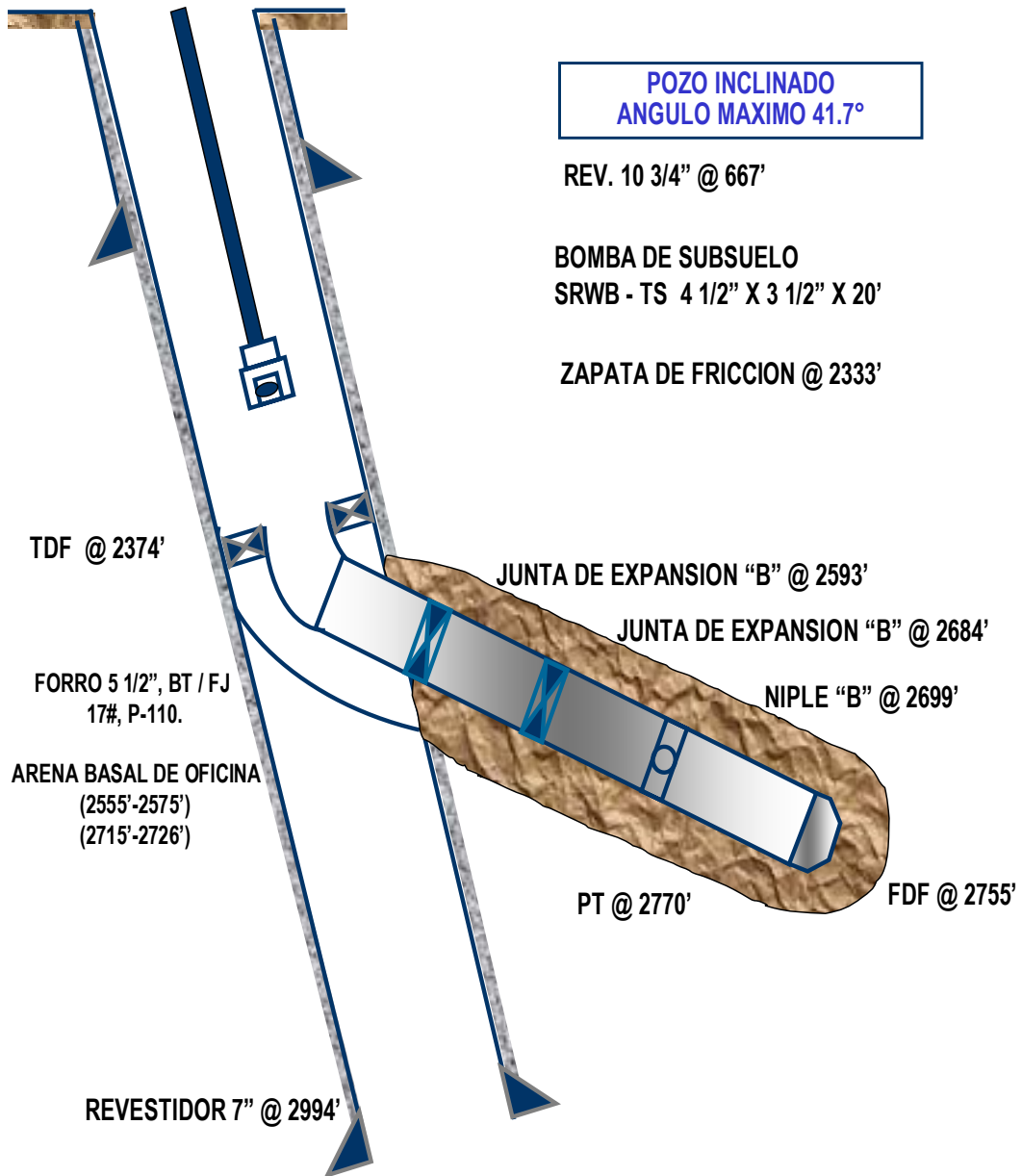


DIAGRAMA MECANICO ACTUAL

POZO: SDZ-166

CAMPO SAN DIEGO

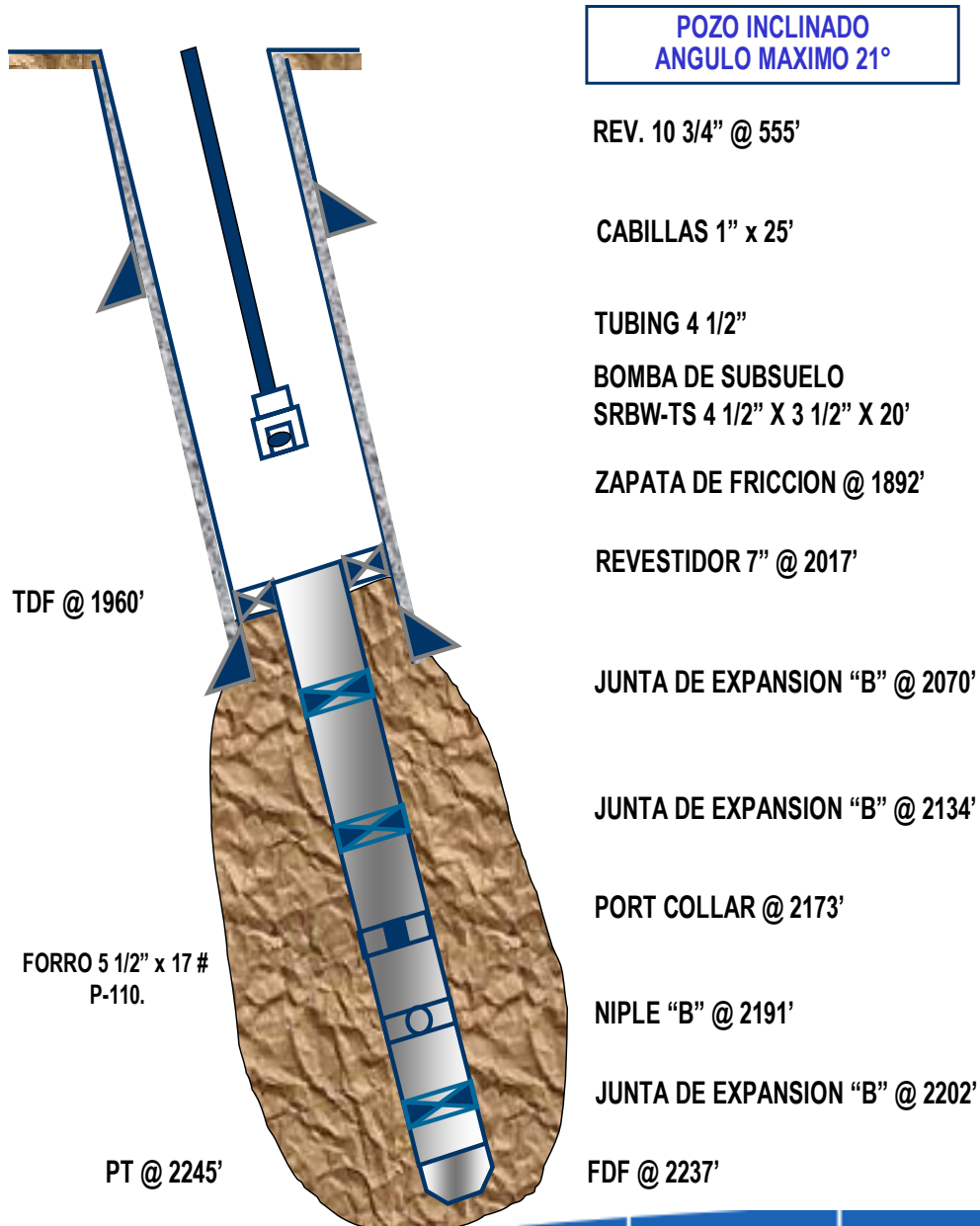




DIAGRAMA MECANICO ACTUAL

POZO: SDZ-166.

CAMPO SAN DIEGO

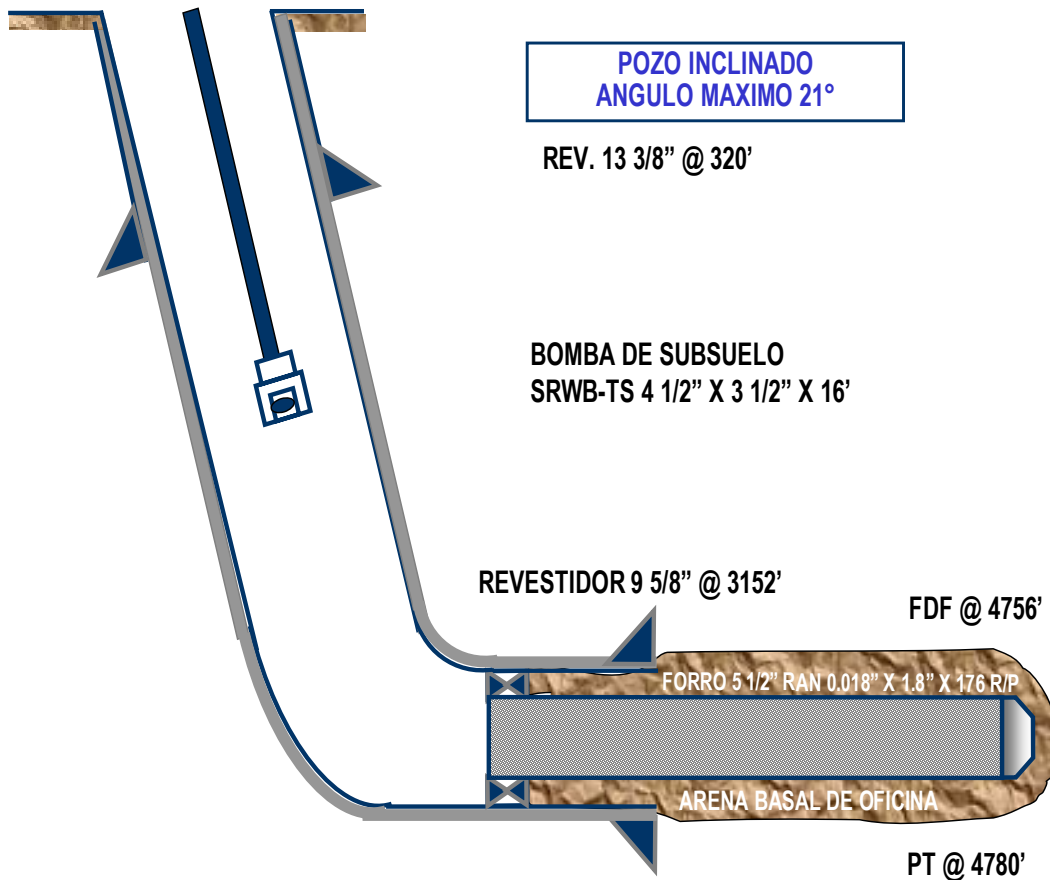
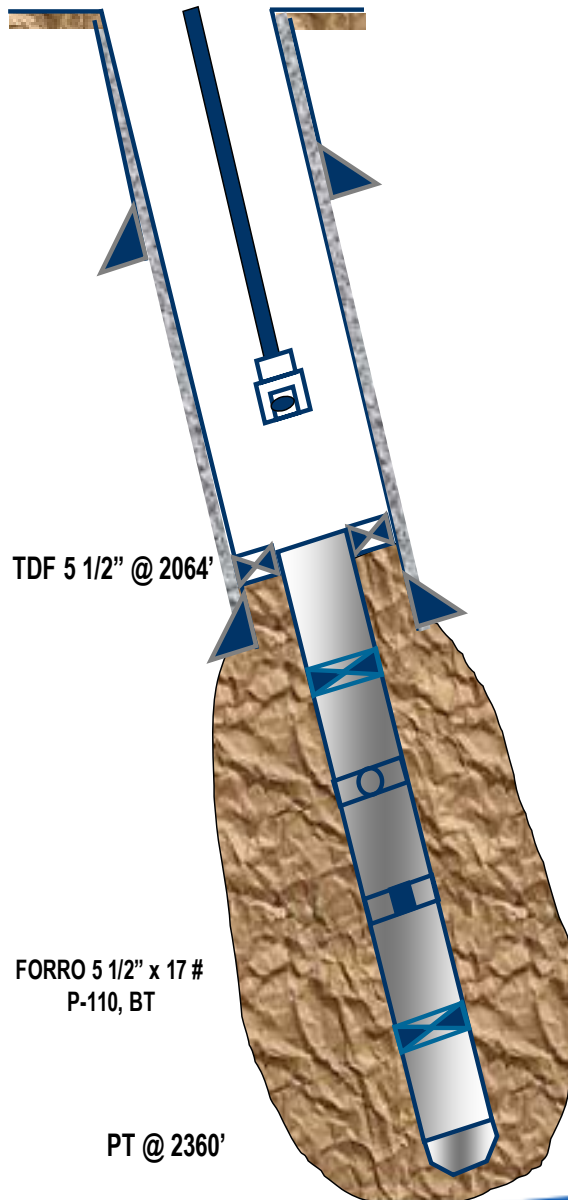


DIAGRAMA MECANICO ACTUAL

POZO: SDZ-164.

CAMPO SAN DIEGO



**POZO INCLINADO
ANGULO MAXIMO 30°**

REV. 10 3/4" @ 577'

CABILLAS 1" X 25'

TUBING 4 1/2"

BOMBA de SUBSUELO

ARHB-F 4 1/2" X 3 3/4" X 3 3/1" X 30'

ZAPATA DE FRICCION @ 2019'

REVESTIDOR 7" @ 2130'

JUNTA DE EXPANSION "B" @ 2201'

PORT COLLAR @ 2261'

NIPLE "B" @ 2283'

JUNTA DE EXPANSION
@ 2315'

FDF @ 2355'

TDF 5 1/2" @ 2064'

FORRO 5 1/2" x 17 #
P-110, BT

PT @ 2360'



DIAGRAMA MECANICO ACTUAL

POZO: SDZ-182

CAMPO SAN DIEGO

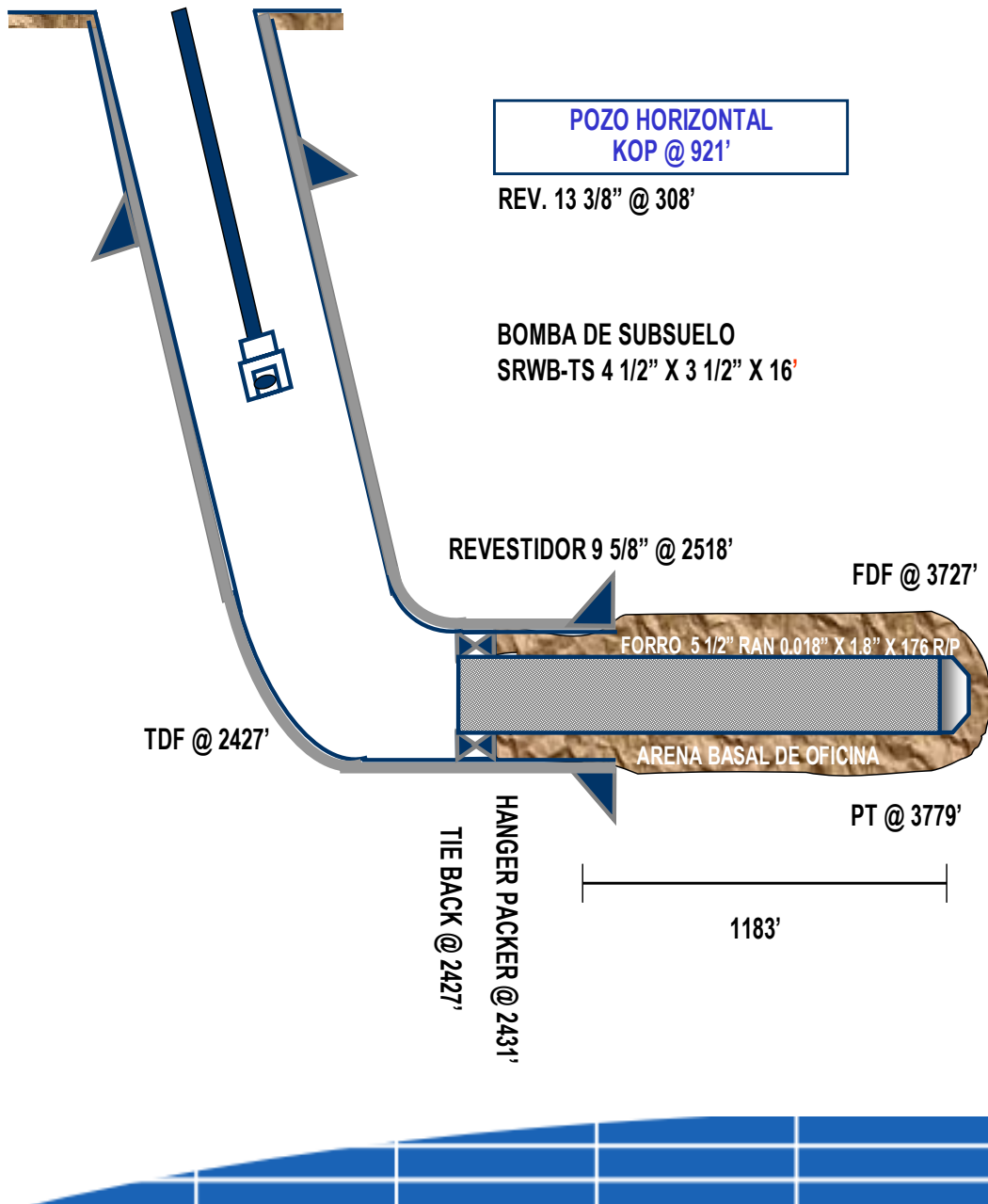
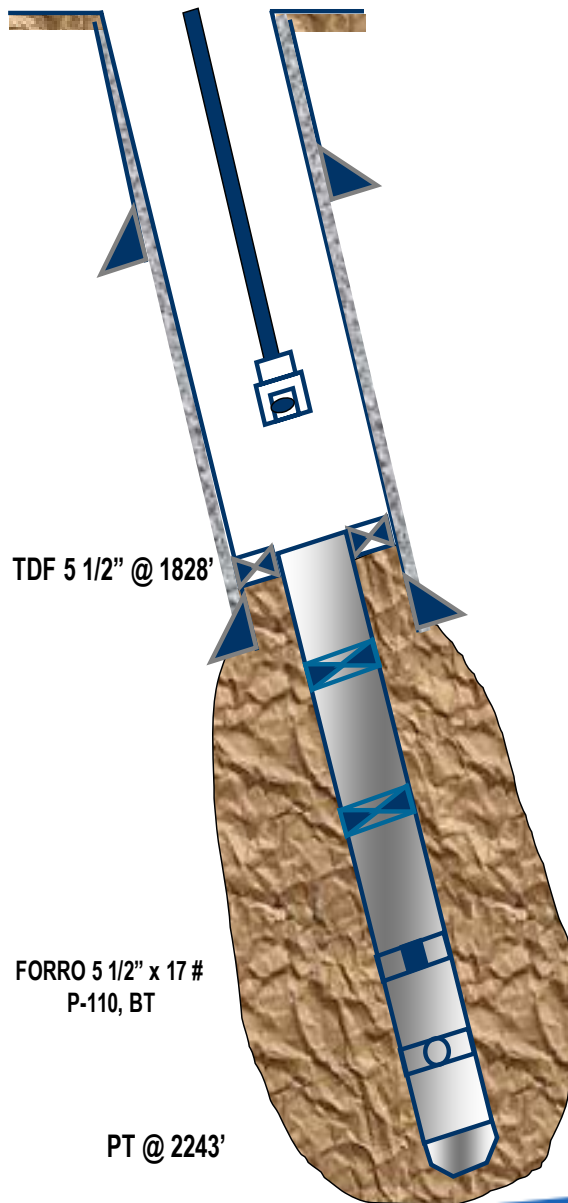




DIAGRAMA MECANICO ACTUAL

POZO: SDZ-170.

CAMPO SAN DIEGO



**POZO INCLINADO
7,5°**

REV. 10 3/4" @ 510'

CABILLAS 1 1/8"

TUBING 4 1/2"

BOMBA de SUBSUELO

ARHB-F 4 1/2" X 3 3/4" X 3 1/2" X 30'

ZAPATA DE FRICCION @ 1789'

REVESTIDOR 7" @ 1900'

JUNTA DE EXPANSION "B" @ 1960'

JUNTA DE EXPANSION "B" @ 2024'

PORT COLLAR @ 2055'

NIPLE "B" @ 2072'

DFD @ 2114'

TDF 5 1/2" @ 1828'

FORRO 5 1/2" x 17 #
P-110, BT

PT @ 2243'



DIAGRAMA MECANICO ACTUAL

POZO: SDZ-152

CAMPO SAN DIEGO

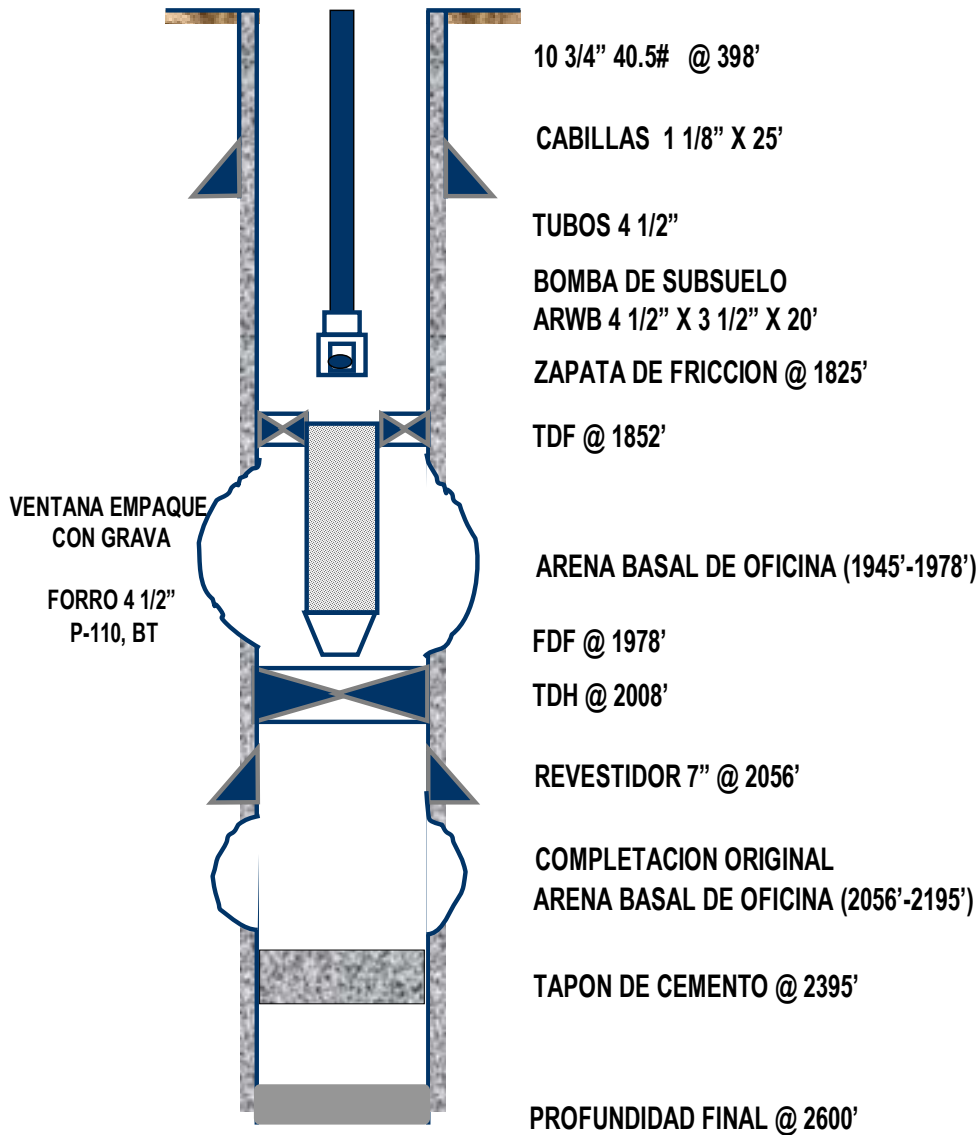
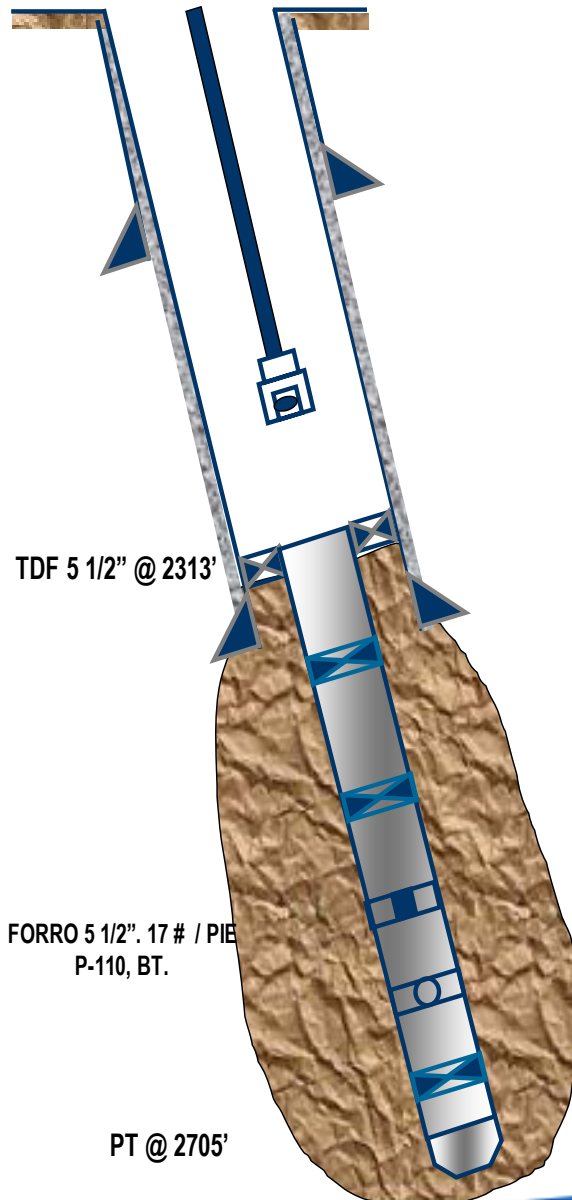


DIAGRAMA MECANICO ACTUAL

POZO: SDZ-167.

CAMPO SAN DIEGO



**POZO INCLINADO
ANGULO MAXIMO 40.5°**

REV. 10 3/4" @ 643'

CABILLAS 1" 1/8" x 1'

TUBING 4 1/2"

BOMBA DE SUBSUELO
ARWB 4 1/2" X 3 3/4" X 30'

ZAPATA DE FRICCION @ 2285'

REVESTIDOR 7" @ 2385'

JUNTA DE EXPANSION "B" @ 2439'

JUNTA DE EXPANSION "B" @ 2503'

PORT COLLAR @ 2557'

NIPLE "B" @ 2559'

JUNTA DE EXPANSION @ 2590'

FDF @ 2645'

TDF 5 1/2" @ 2313'

FORRO 5 1/2". 17 # / PIE
P-110, BT.

PT @ 2705'

DIAGRAMA MECANICO ACTUAL CAMPO BARE

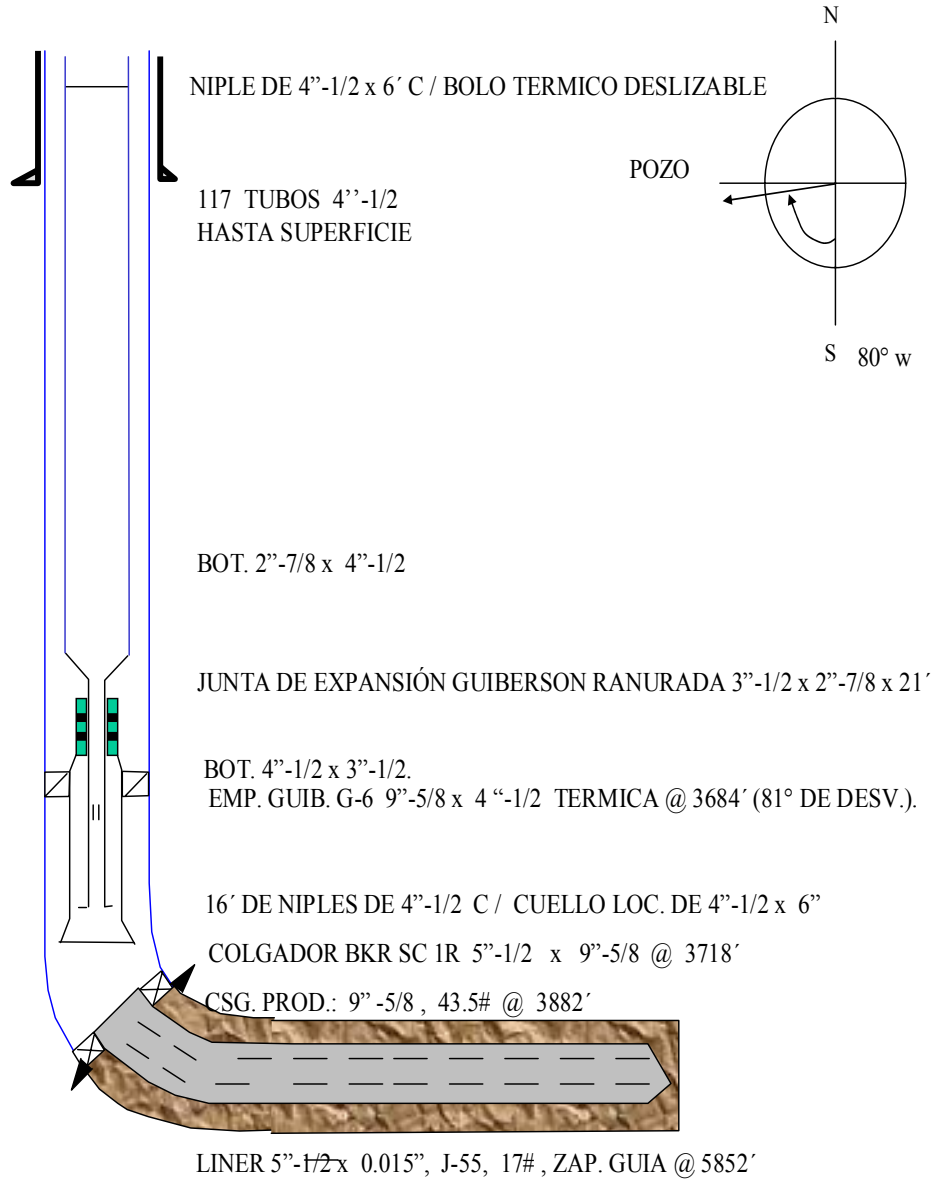


DIAGRAMA MECANICO ACTUAL

CAMPO BARE

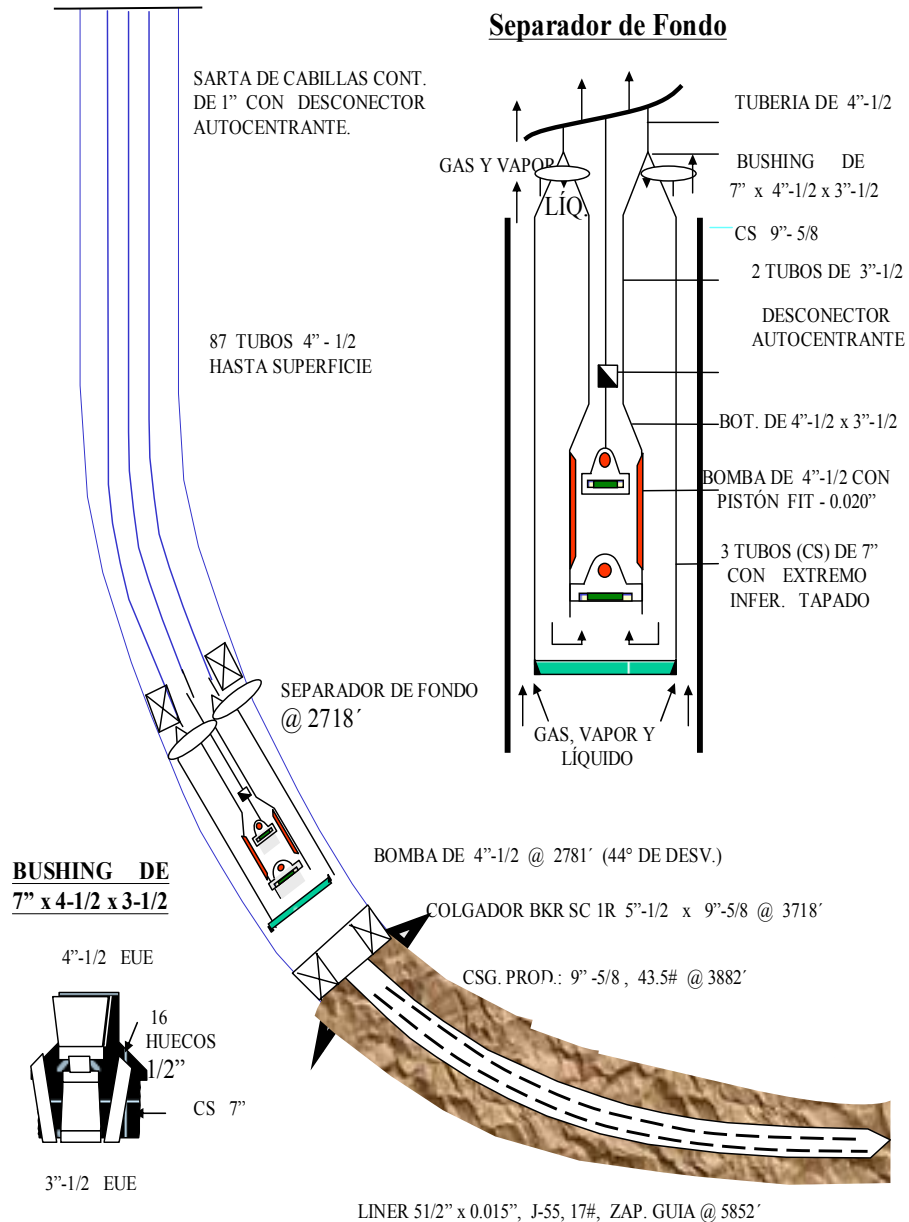


DIAGRAMA MECANICO ACTUAL

CAMPO CARABOBO

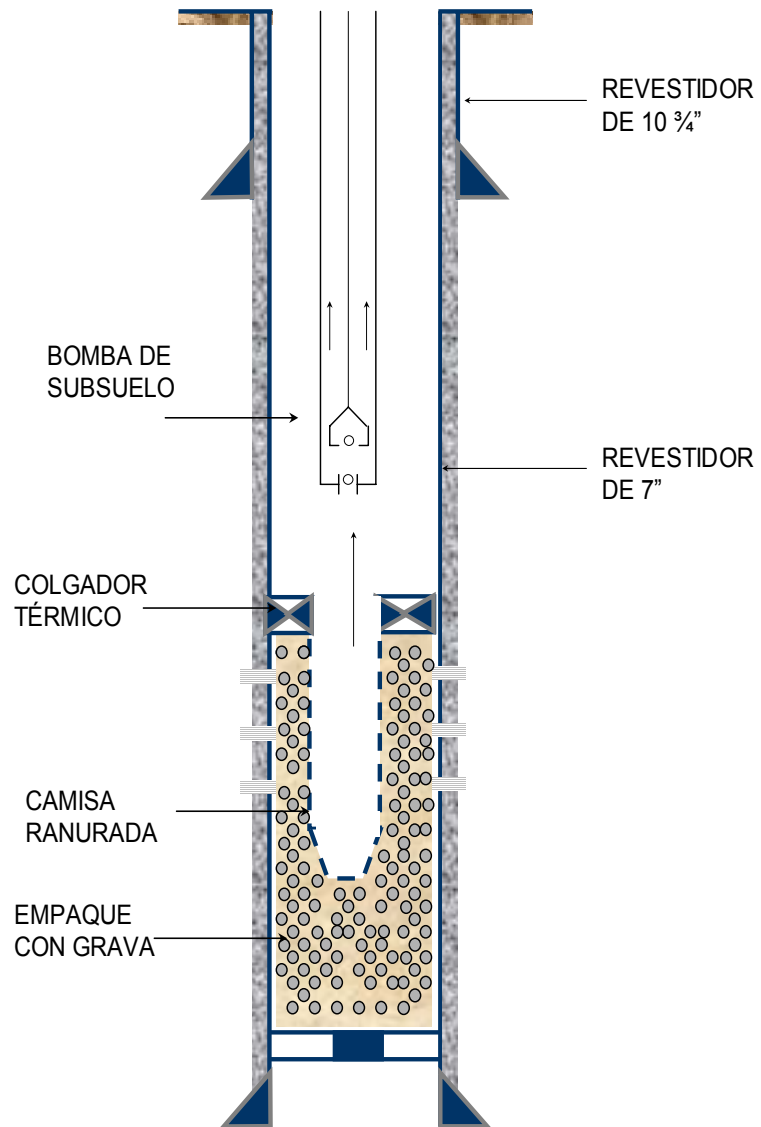


DIAGRAMA MECANICO ACTUAL

CAMPO CARABOBO

